



in  
INSTRUMENTATION

## Handle Designs

### Pinnacle 360°™

PIN

Pinnacle 360° is our line of fully disposable, hand-held retinal surgical instruments. As its name suggests, the Pinnacle 360° product line provides high quality and value. With Pinnacle 360°, surgeons can expect consistent performance in a variety of applications.

- Offers wide variety of disposable tip options
- Fully disposable
- 360° actuation to approach the retina from any angle
- Ergonomic design to reduce fatigue
- Color coded handles for gauge identification
- 20ga, 23ga, 25ga, 27ga, Foreign Body



### Premium

Our fully reusable Premium line delivers consistency and performance. Surgeons enjoy the familiar comfort and reliability of knowing their tools will provide exceptional performance day in and day out.

- Large and small handle options
- Add "S" to the end of catalog number to order small handle
- Blackened stainless steel tips to reduce glare
- Etched serial numbers for quick and easy identification
- Linear closure
- Microserrations™ offered for select tip styles
- 18ga, 19ga, 20ga, 23ga, 25ga



### Syntrifugal™ Handle and Disposable Tips

D00.01SL, D00.01SS

The Syntrifugal line provides surgeons with a reusable titanium handle with a disposable tip. Surgeons enjoy consistent tactile feel with the freedom to choose from a comprehensive selection of disposable tips.

- Large and small handle options
- Handle design that allows the tip to rotate 360°
- 20ga, 23ga, 25ga, 27ga



PIN	Pinnacle 360°™
D	Disposable Tip used with Syntrifugal Handle
# ONLY	Premium reusable instrument

## ILM

### Eckardt Forceps

20G 39.08PIN; D39.08; 39.28  
23G 39.08.23PIN; D39.08.23; 39.28.23  
25G 39.08.25PIN; D39.08.25; 39.28.25  
27G 39.08.27PIN



### End Grasping Forceps

20G 09.12PIN  
23G 09.12.23PIN  
25G 09.12.25PIN



### Fine Tip Eckardt Forceps

20G 09.10  
23G 09.10.23PIN; D39.10.23; 09.10.23  
25G 09.10.25PIN; D39.10.25; 09.10.25



### Lambert ILM Forceps

20G 09.26



### Microserrated™ End Grasping Forceps

23G 39.12.23PIN  
25G 39.12.25PIN



### Morris/Witherspoon Fullview ILM Forceps

20G D09.40; 09.50  
25G D09.40.25; 09.50.25



### Pincer End Grasping Forceps

20G 11.28  
23G 11.28.23



### Pointed Micro Forceps

20G 11.23  
23G 11.23.23



### Tano Asymmetrical Micro Forceps

20G 09.04PIN; D09.04; 39.23  
23G 39.03.23PIN; D39.03.23; 39.23.23  
25G 39.03.25PIN; D39.03.25; 39.23.25  
27G 39.03.27PIN; D39.03.27



DISPOSABLES STERILE, 5/BOX

PIN Pinnacle 360°™ D Disposable Tip used with Syntrifugal Handle # ONLY Premium reusable instrument

ILM

Microserrated™ Snub Nosed Forceps

23G 39.18.23PIN



Dual Purpose

Apte Corset Forceps

23G 39.07.23PIN, 39.27.23  
25G 39.07.25PIN, 39.27.25



Tano Asymmetrical Peeling Forceps

20G 39.24



Microserrated™ Tewari Omnicep Forceps

23G 39.15.23PIN, D39.15.23  
25G 39.15.25PIN, D39.15.25  
27G 39.15.27PIN



Heavy Membrane

Pyramid Tip Forceps

20G 11.04PIN, 11.24  
23G 11.04.23PIN  
25G 11.04.25PIN

35  
37



Foreign Body

BB Removal Forceps

18G 11.40PIN, 11.40



Serrated Jaw Forceps

20G 11.06PIN, 11.26  
23G 11.06.23PIN  
25G 11.06.25PIN

36  
38



Foreign Body Forceps

19G 11.20PIN, 11.20



IO Foreign Body Magnet

18G 12.21PIN, 12.21



## Scissors

### Horizontal Scissors Curved

20G 23.76PIN, D23.76  
23G 23.76.23PIN, D23.76.23  
25G 23.76.25PIN, D23.76.25



### Morris Vertical Scissors

20G 10.24PIN, 10.24  
29 23G 10.24.23PIN 10.24.23  
25G 10.24.25PIN, 10.24.25



### Horizontal Scissors Medium Curved

20G 23.26  
23G 23.26.23  
25G 23.26.25



### Straight Scissors

20G 23.29  
23G 23.29.23



### Horizontal Scissors Small Curved

20G 23.27



### Vertical Scissors

20G 10.21



### Microserrated™ Horizontal Scissors Medium Curved

20G 23.56  
23G 23.56.23  
25G 23.56.25



## Pick Forceps

### Ducournau Serrated Forceps

20G D29.02, 29.22  
23G 29.22.23



## Subretinal

### Thomas Horizontal Subretinal Forceps

20G 39.21



## Myopic

### Fine Tip Eckardt Forceps

23G 09.10.23PIN-M  
25G 09.10.25PIN-M  
• 37mm



## Pick Forceps

20G 09.05PIN, 09.25  
23G 09.05.23PIN, 09.25.23  
25G 09.05.25PIN, 09.25.25



### Thomas Horizontal Subretinal Scissors 135°

20G 23.23



### Microserrated™ Tewari Omnicep Forceps

23G 39.15.23PIN-M  
25G 39.15.25PIN-M  
• 37mm



## Vertical Forceps

23G 11.41.23



### Thomas Vertical Subretinal Forceps

20G 21.21



## Illuminated Disposables

### Irrigating Illuminated Capone Pick

20G 56.44P



### Illuminated Capone/Rizzo Pick

23G 56.45.23P



### Illuminated Membrane Rake

23G 56.46.23P



## Scleral Markers

### Awh Sutureless

51.20

- Marked at 3mm and 4mm



### Awh

51.35

- Marked at 3mm and 4mm



### Awh Horseshoe

51.45

- Marked at 3mm and 4mm
- Specifically designed to stabilize cannula



### Chow

51.25

- Marked at 3mm and 4mm



## Reusable Picks + Spatulas

### Rice ILM Elevator 127°

- 20G 20.02  
23G 20.02.23  
25G 20.02.25
- 42ga
  - .10mm at tip



### Shiraga Pick, 110°

- 20G 20.31
- 33ga
  - .20mm at tip



### Awh Serrated Pick 135°

- 20G 20.41  
23G 20.41.23  
25G 20.41.25
- 30ga
  - .30mm at tip



### Membrane Peeler, Spherical Tip 110°

- 20G 28.04
- 30ga
  - .30mm at tip



### Michels' Hook 90°

- 20G 28.21
- 36ga
  - .20mm at tip





## Reusable Picks + Spatulas

### Thomas Subretinal Perforator/Spatula 36ga 131°

20G 20.01

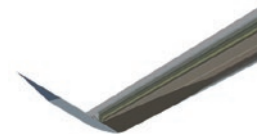
- 36ga
- .10mm at distal tip



### Lewis 33ga Subretinal Perforator 135°

20G 27.01

- 36ga
- .20mm at tip



### Irrigating Spatula 120°

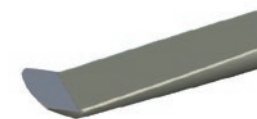
20G 28.30

- 24ga
- .55mm at tip



### Rounded Tip Spatula 140°

20G 28.07



### Thomas Blunt 36ga Subretinal Perforator Spatula 131°

20G 20.30

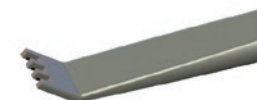
- 36ga
- .20mm at tip



### Membrane Rake, Flat Tip 140°

20G 28.05 Flat tip

20G 28.06 Curved tip



### Lewis 33ga Subretinal Perforator 90°

20G 26.01

- 36ga
- .20mm at tip



### Stellaris®PC Single Use VitreoRetinal Membrane Pick

23G SUK01

25G SUK02



# Reusable Cannulas + Needles

## Reflux Handle

- 31.00
- For use with products 30.01–30.09 and 30.76



## Universal Soft Tip

- 30.10  
30.10.23
- Reusable Soft Tip with extendable silicone tip



## Blunt Extrusion Needle

- 20G 30.01



## Soft Tip Cannula

- 20G 30.08



## Replacement Reflux Reservoir

- 31.01 2/box,  
31.02 10/box



## Tapered Blunt Extrusion Needle

- 20G 30.02
- Tapers to 27ga
  - .40mm tip



## Resnick Subretinal Fluid Drainage Needle

- 25G 30.09
- 2.5mm long 1mm bevel



## Thomas Subretinal, 30ga Needle

- 20G 02.03
- 30ga
  - .30mm tip



## Brush Cannula Tip, Straight

- 20G 30.06



## Metal Locking Luer-Hub Needle

- With products in this section



---

### Chang Perfluorocarbon Cannula

20G 08.01

- 25ga
- .50mm tip



---

### Thomas Subretinal, 33ga Cannula

20G 13.01

- 33ga
- .20mm tip



---

### Lewis Subretinal, 33ga TPA Cannula 90°

20G 15.01

- 33ga
- .20mm tip



---

### Thomas Subretinal, 33ga Sharp Bent Cannula

20G 12.01

- 33ga
- .20mm tip



---

### Lewis Subretinal, 33ga TPA Cannula 135°

20G 14.01

- 33ga
- .20mm tip



## Disposable Backflush Instruments

---

### Disposable Backflush Handle



---

### Blunt Tip

20G D31.01

- 5/box



---

### Brush Tip

20G D31.06

- 5/box



---

### Soft Tip

20G D31.08

23G D31.08.23

25G D31.08.25

- 5/box



## Disposable Cannulas + Needles

### Rigid Micro Injection Cannula, Straight

20G 12.02, 12.03

- .10mm at tip
- Black, disposable handle
- 5/box



### Rigid Micro Injection Cannula, Angled

20G 12.12, 12.13

- .10mm at tip
- Black, disposable handle
- 5/box



### De Juan/Awh Subretinal Injection

25G 12.03.25

- 41ga tip
- .10mm at tip
- 5/box



### Soft Tip Cannula

23G 30.08.23

25G 30.08.25

27G 30.08.27

- 6/box

20

21



### Slotted Soft Tip Cannula

23G 30.18.23

25G 30.18.25

- 6/box



### Vitreoretinal Soft Tip

20G 30.76

- For use with 31.00 handle
- 31mm tubing length
- 3mm flexible silicone
- 10/box



### Transconjunctival Chow Silicone Oil Injection Cannula

25G 30.80.25

- 6/box



### Viscous Fluid Injection Pack

19020 Polyimide VFI cannulas

19030 Stainless Steel VFI Cannulas

- Provides the surgeon the consumables necessary to perform viscous fluid injection: syringe, plunger rod, piston, syringe tip cap, injection airline and VFI cannulas (20ga, 23ga and 25ga)
- For use with Synergetics® VFI System
- Sterile, 6/box

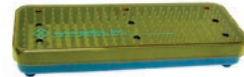


## Instrument Trays

### Small

28.25

- 6" x 2" x .75"
- 15.2cm x 5.1cm x 1.9cm
- Holds 2 picks or 1 instrument



### Medium

23102SYN

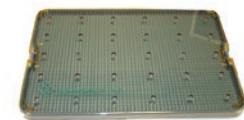
- 10" x 6" x .75"
- 25.4cm x 15.2cm x 1.9cm
- Holds 10 picks or 6 instruments



### Large

23101SYN

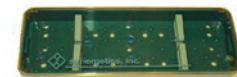
- 15" x 10" x .75"
- 38.1cm x 25.4cm x 1.9cm
- Holds 25 instruments



### Diamond Knife

23103SYN

- 7.5" x 2.6" x .75"
- 19.1cm x 3.8cm x 1.9cm
- Holds 1 diamond knife



## Tip Protectors

### Tip Protector, Handled Picks

34.71

- Fits Synergetics® handled picks



### Tip Protector for Picks, Rakes and Spatulas

34.72

- Fits Synergetics® handled picks



### Tip Protector, Split, Universal

34.74

- Fits Synergetics® Large and Small Squeeze handles



### Apex™ Tip Protector

34.78

- Doubles as cleaning luer and tip protector for the APEX™ handle



## Luers + Plugs

### Cleaning Luer

34.80

- For Synergetics® premium instruments



### Disposable Scleral Plug

19G 12.41

20G 12.40

